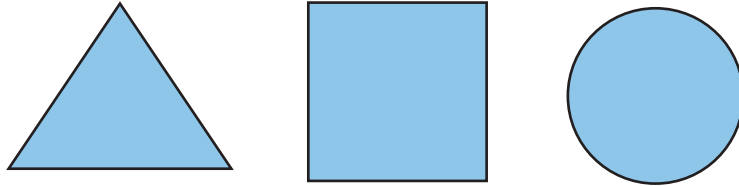


Drawing with Shapes:

Using the Pathfinder palette



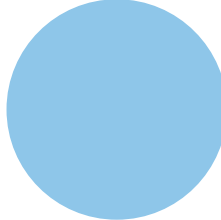
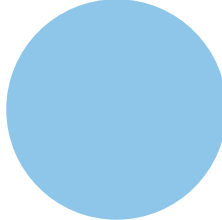
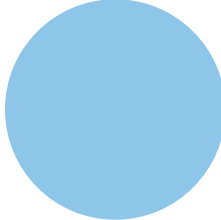
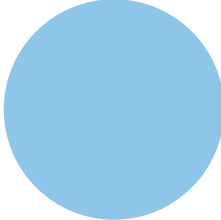
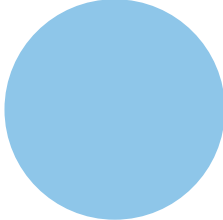
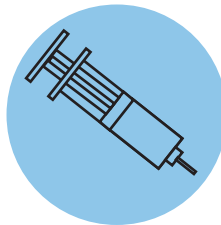
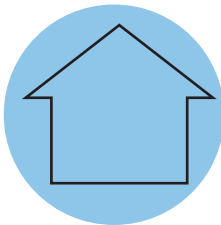
- Shift-option-drag
- Duplicate (cmd-D)
- Group (cmd-G)
- Scale or stretch by pulling handle

- Unite

- Minus front
- Shift-option-drag

- Unite

- Copy/paste in front
- Unite
- Rotate



- Blend
- Rotate

- Unite, minus front
- Shift-option-drag to duplicate

- Minus front
- Clipping mask

- Align
- Copy while rotating

- Unite
- Group, then duplicate columns

