

Easy 3-d How-to

1 Set up

Same length

Group each side and floor separately

2 Scale

Horizontal scale all pieces **87%**

3 Shear

Vertical axis

Shear: -150%

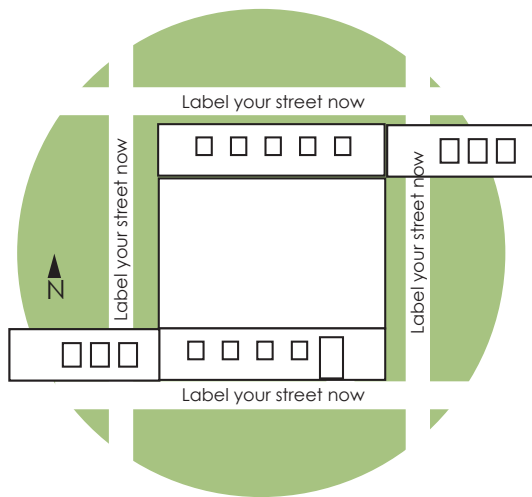
Left wall and floor/roof: -150%
Right wall: 150%

Shear: -150% Shear: 150%

4 Rotate roof/floor: 60°

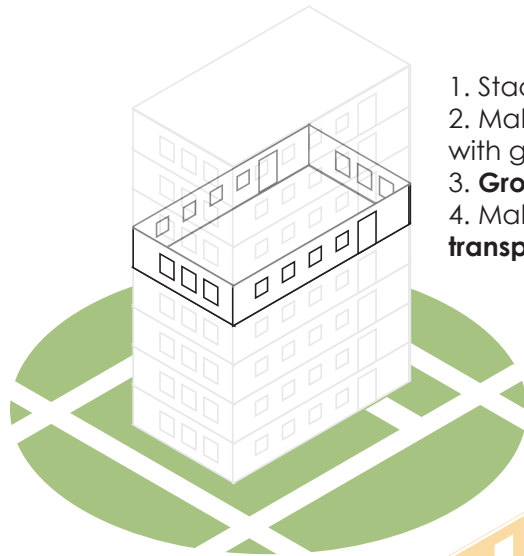
5 Finish

Copy front walls to make back ones, send roof to back to make floor



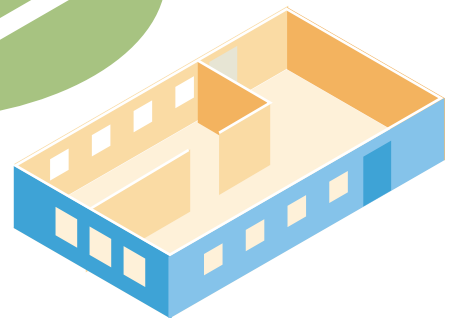
Ideas!

You can do a whole block too. Just lay out the pieces first. Even label the streets.



1. Stack floors
2. Make all but one with grey lines
3. **Group** top floors
4. Make top floor group **transparency > normal > 50%**

If you want see-through windows, select window and wall and **minus front**



Orthographic perspective allows pieces to fit together....

Stack cubes to compare a really big number to a really littel one

